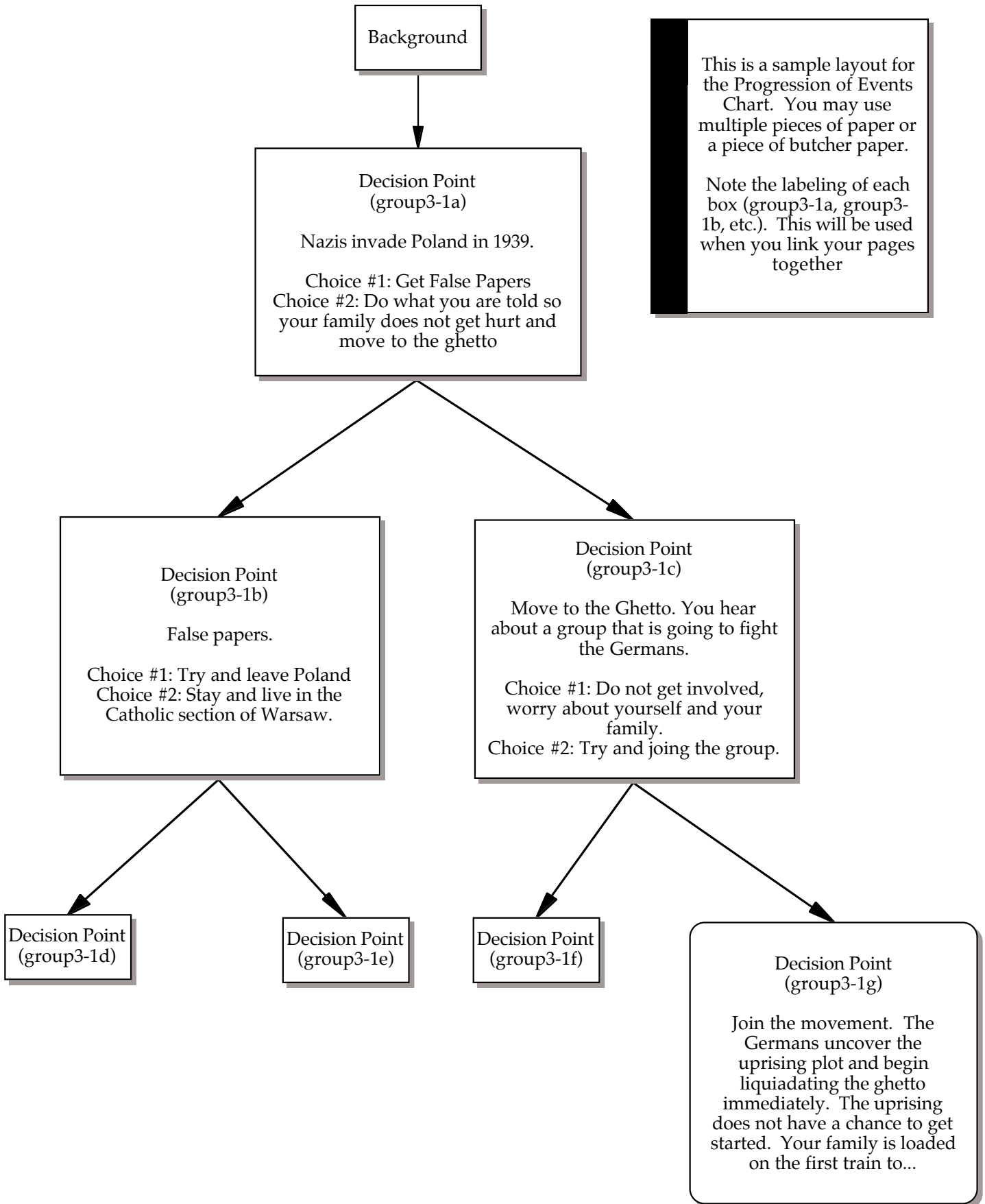


Progression of Events Chart



Background

I. Decision Point

(group3-1a)

Nazis invade Poland in 1939.

Choice #1: Get False Papers

Choice #2: Do what you are told so your family does not get hurt and move to the ghetto

A. Decision Point

(group3-1b)

False papers.

Choice #1: Try and leave Poland

Choice #2: Stay and live in the Catholic section of Warsaw.

1. Decision Point

(group3-1d)

2. Decision Point

(group3-1e)

B. Decision Point

(group3-1c)

Move to the Ghetto. You hear about a group that is going to fight the Germans.

Choice #1: Do not get involved, worry about yourself and your family.

Choice #2: Try and joining the group.

1. Decision Point

(group3-1g)

Join the movement. The Germans uncover the uprising plot and begin liquidating the ghetto immediately. The uprising does not have a chance to get started. Your family is loaded on the first train to...

2. Decision Point

(group3-1f)

This is a sample layout for the Progression of Events Chart. You may use multiple pieces of paper or a piece of butcher paper.

Note the labeling of each box (group3-1a, group3-1b, etc.). This will be used when you link your pages together